



AN1017

- How to buy and use a PROXIMITY function card pack

Buying a PROXIMITY function card pack

A PROXIMITY function card pack is purchased in the same way as PROXIMITY user card packs. An enrolment card is included in the pack to enable it to be enrolled onto each reader on the site.

Enrolment card

Initialising a new system - When a PROXIMITY system is first switched on, the enrolment card must be presented so that the reader will identify the user cards for your site.

1. All Paxton token packs include an enrolment card.
2. Present the enrolment card from the original pack.
3. Present the new enrolment card from the new pack.
4. All tokens in the pack are now valid. The enrolment card can now be returned to its pack.

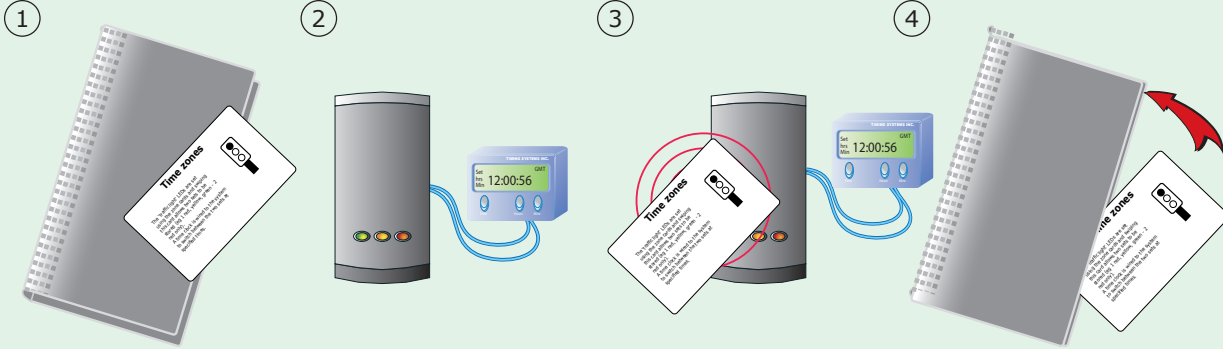
Zone cards

This allows you to control access through doors by limiting access to card holders defined by the colour of their card. For more information on zoning see: [AN1026 - How to use colour zoning](#).
< <http://paxton.info/4> > The following example is for Green cards.

1. Take the green zone card from the pack.
2. To restrict access to green cards or keyfobs present the card to the reader.
3. The green LED goes out indicating green cards do not have access.
4. To allow access to green cards again, present the green zone card to the reader. The green LED will come back on. When finished return the card to its pack.

Time zones card

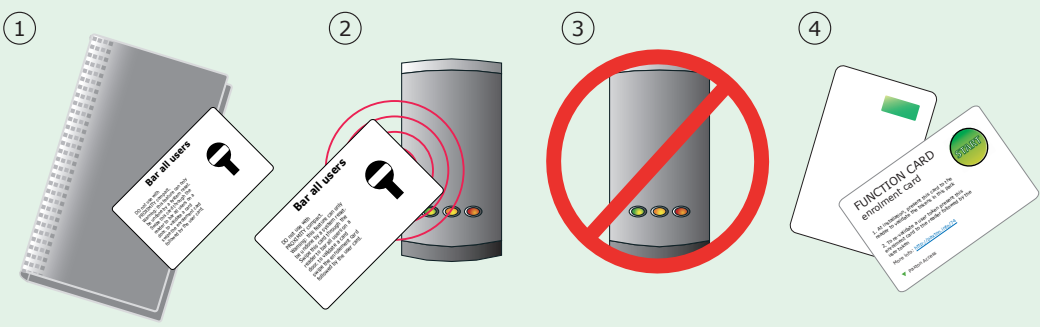
Changes the function of the Blue wires (Compact) or Contact input (Switch2) to enable the connection of a time clock before setting up a second set of colour zones. See also: [AN1026 - How to use colour zoning](http://paxton.info/4). < <http://paxton.info/4> >



1. Take the time zones function card from the pack.
2. Connect a time clock to the Blue wires (compact) or Black/Contact (Switch2) using voltage free contacts. Set up the clock so its two different modes, 'on' and 'off', correspond to the times that you want to switch between the two sets of colour zones.
3. Present the time zones function card to the reader.
4. With the clock contacts 'off', use the zone cards to set up your first set of zones. Set the clock contact 'on' and set up the second set of zones. By observing the colour LED's you can confirm which zones are active in both the 'off' and 'on' conditions.
5. To disable the function, present the card again. A compact system will also require the Remote release card to be presented.

Bar all users card

This card is typically used when a reader is installed where only a small number of users from a large number of cardholders are allowed access. All users are barred and just a few tokens are re-enrolled.

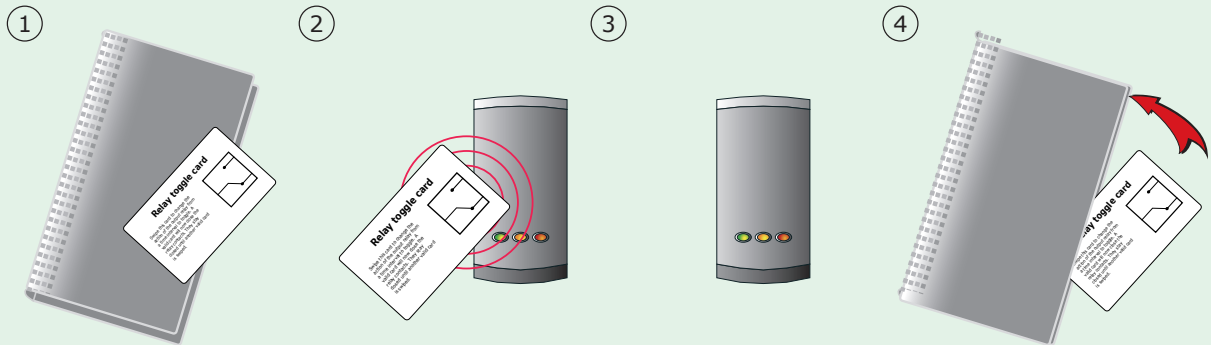


1. Take the bar all users function card from the pack.
2. To bar all users present the bar all users card to the reader.
3. When the card has been read the LED's go off and come back on. All cards are now barred.
4. To grant access to individual cards present the enrolment card followed by the user card you wish to re-validate.

NOTE: This function can only be undone by resetting the system.

Toggle card

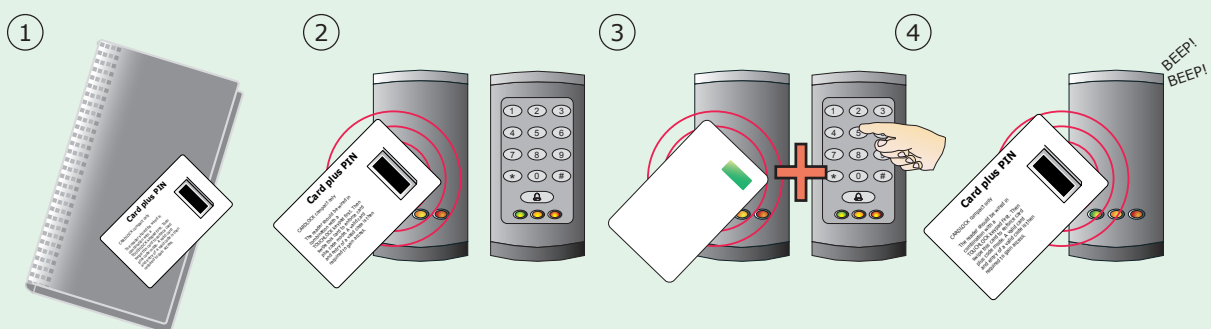
Changes the function of the system output from timed to toggle. A valid card is required to open the door and the next valid card will lock it again.



1. Take the relay toggle function card from the pack.
2. Present the toggle relay card to the reader.
3. When a user card is presented the relay will now remain closed until another valid card is presented.
4. To change the relay mode back, present the relay toggle card again. When finished return card to its pack.

Card plus PIN

A PROXIMITY compact reader can be used in conjunction with a TOUCHLOCK keypad system to provide Card plus PIN operation. To allow access, the compact will only release its lock when it reads a valid user card AND the blue wires are shorted together. The blue wires may be shorted by TOUCHLOCK Switch2 NO/COM relay contacts or a TOUCHLOCK compact with a relay wired across its lock wires.



1. The Blue wires must be connected to the voltage free output of a relay driven by a TOUCHLOCK compact keypad (or TOUCHLOCK Switch2 - COM/NO).
2. Present the function card to the PROXIMITY reader.
3. When the card plus PIN function is engaged, users must present a valid card as well as a valid code to gain access.
4. To disable the card plus PIN mode present the function card to the reader again. A compact system will also require the Remote release card to be presented.

Remote release card

Not Required for Switch2

This card returns the Blue wires of a compact system back to the default exit button function.

This will need to be done if these wires were reconfigured for use with either the 'Card plus PIN' or 'Time zone' function.

